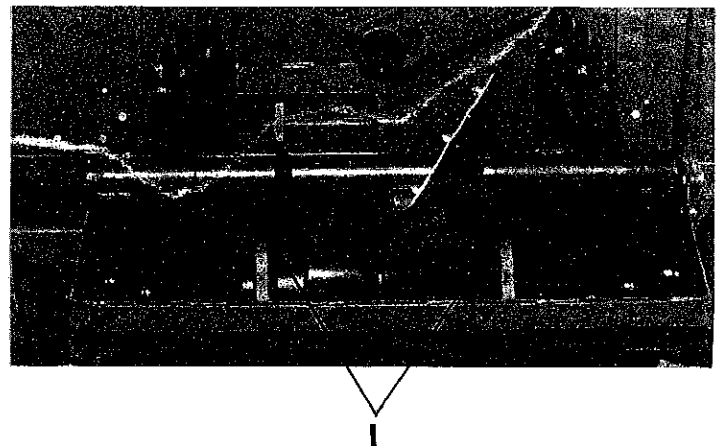
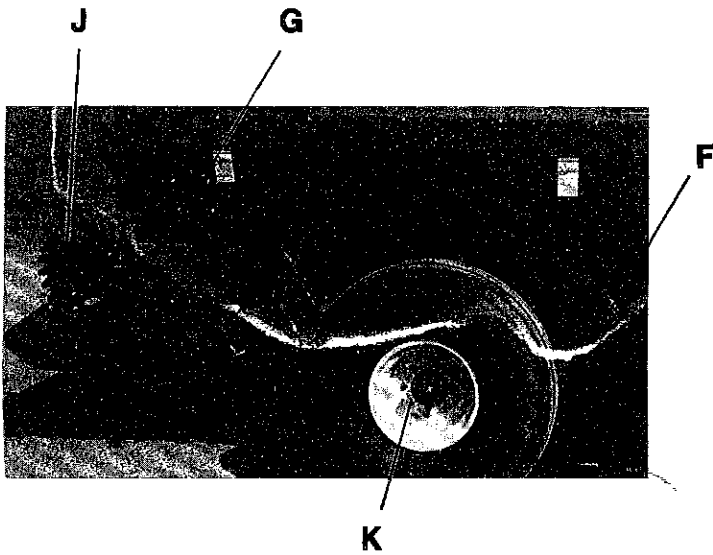
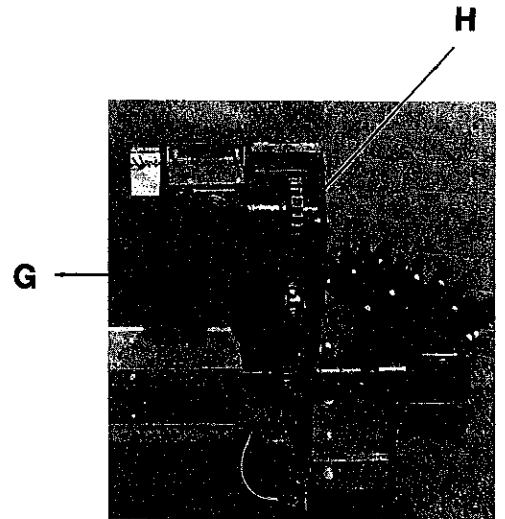
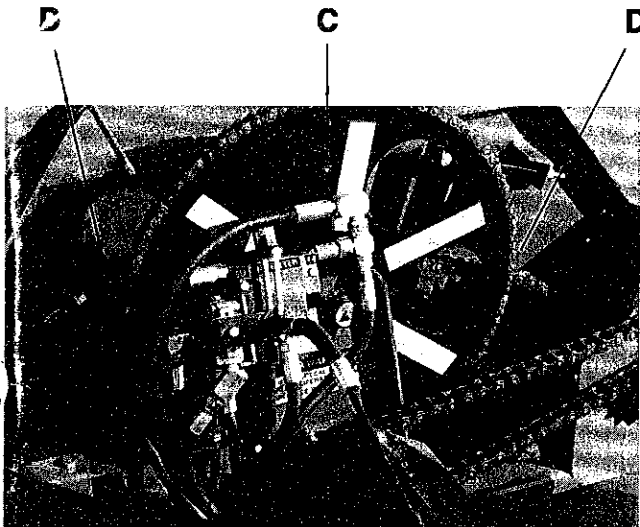


SHIELDS REMOVED FOR CLARITY. DO NOT OPERATE WITH SHIELDS OPEN OR REMOVED.



DECAL LOCATION

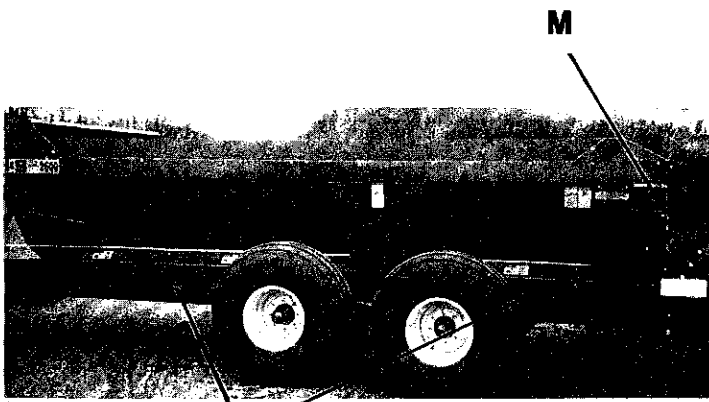
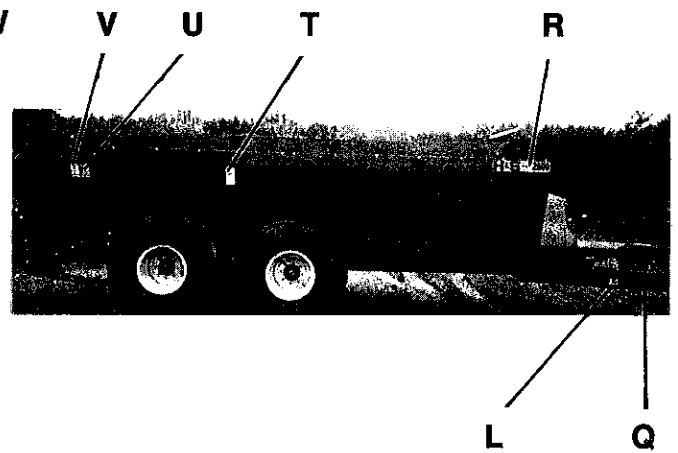
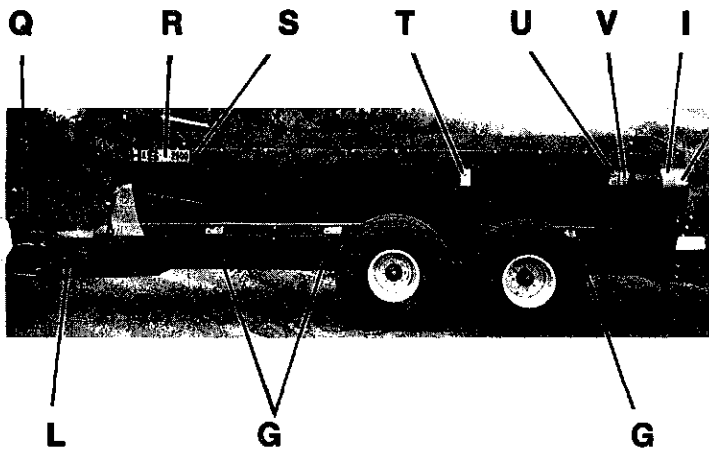
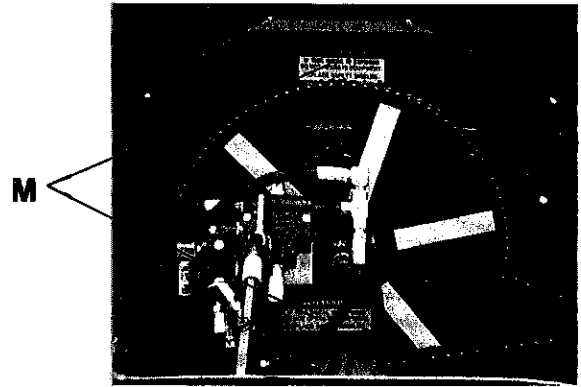
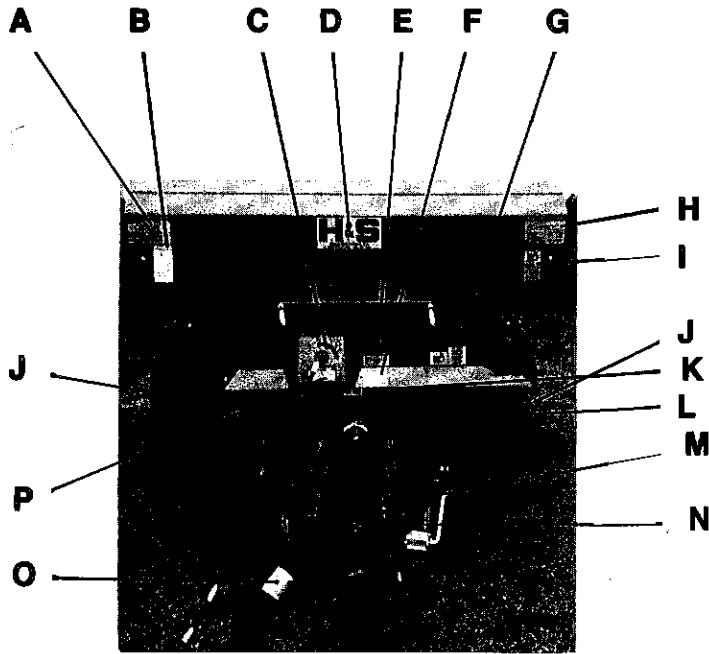
Your H & S Manure Spreader was manufactured with operator safety in mind. Located on the manure spreader are various decals to aid in operation, and warn of danger or caution areas. Pay close attention to all the decals on your Manure Spreader.



DO NOT REMOVE ANY OF THESE DECALS. IF DECALS ARE LOST, DAMAGED, OR IF MANURE SPREADER IS REPAINTED, REPLACE DECALS. REMEMBER: DECALS ARE FOR YOUR PROTECTION AND INFORMATION.

Listed below are the decals on your Manure Spreader. These decals may be ordered individually by part number or by ordering complete set.

REF. NO.	PART NO.	DESCRIPTION
A	11186I	Safety Instructions-Contact Dealer
B	11186C	Danger-Never Allow Riders
C	H83092	Speed Indicator
D	71188	H & S Decal (6 x 12")
E	71188F	Attention-Long Material (2)
F	7+4-3185D	Warning Stay Clear-No Step
G	11186L	Warning - Do Not Remove Shields (4)
H	11186H	Safety Instructions-8 Line Items
I	11186E	Warning-Do Not Hand Clean (2)
J	101-3185	Amber Reflector (2)
K	1787-I	Patent Pending
L	11186B	Warning-No Step (3)
M	11186F	Warning-Do Not Operate (6)
N	106-3185	Serial Number
O	13-10021-00	Danger-Rotating Driveline (Weasler)
P	H82492	Attention-Control Handle
Q	112-11176	Shear Bolts (2)
R	H8692	Model 1350
	H8492	Model 1650
	H8392	Model 1800
	H8592	Model 2200
	H8792	Model 2600
S	71188B	Jack Storage
T	71188A	Danger-Keep Out (2)
U	11186D	Danger-Stay Clear of Beater (4)
V	H82592	Danger-Stay Clear-Flying Objects (2)
W	11186A	Warning-Do Not Remove Shields
X	102-3185	Red Reflector (2)
Y	SMV	SMV Decal
	1350-9192	Complete Decal Set Mdl 1350
	1650-9192	Complete Decal Set Mdl 1650
	1800-9192	Complete Decal Set Mdl 1800
	2200-9192	Complete Decal Set Mdl 2200
	2600-9192	Complete Decal Set Mdl 2600
Paint-H&S Red	ZX21	Gallon
	ZX22	Quart
	ZX23	Pint



M (located behind side shield)

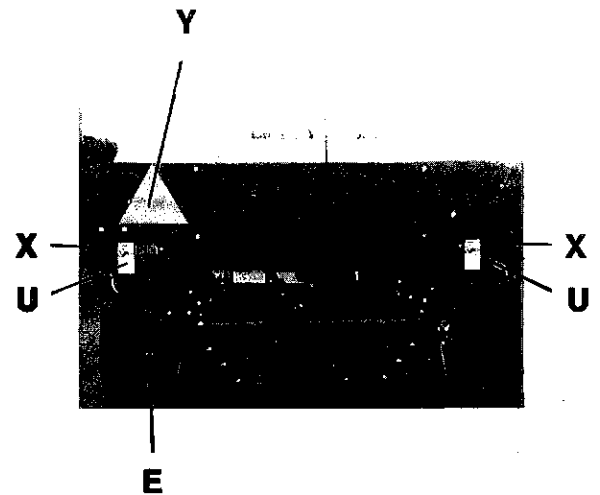
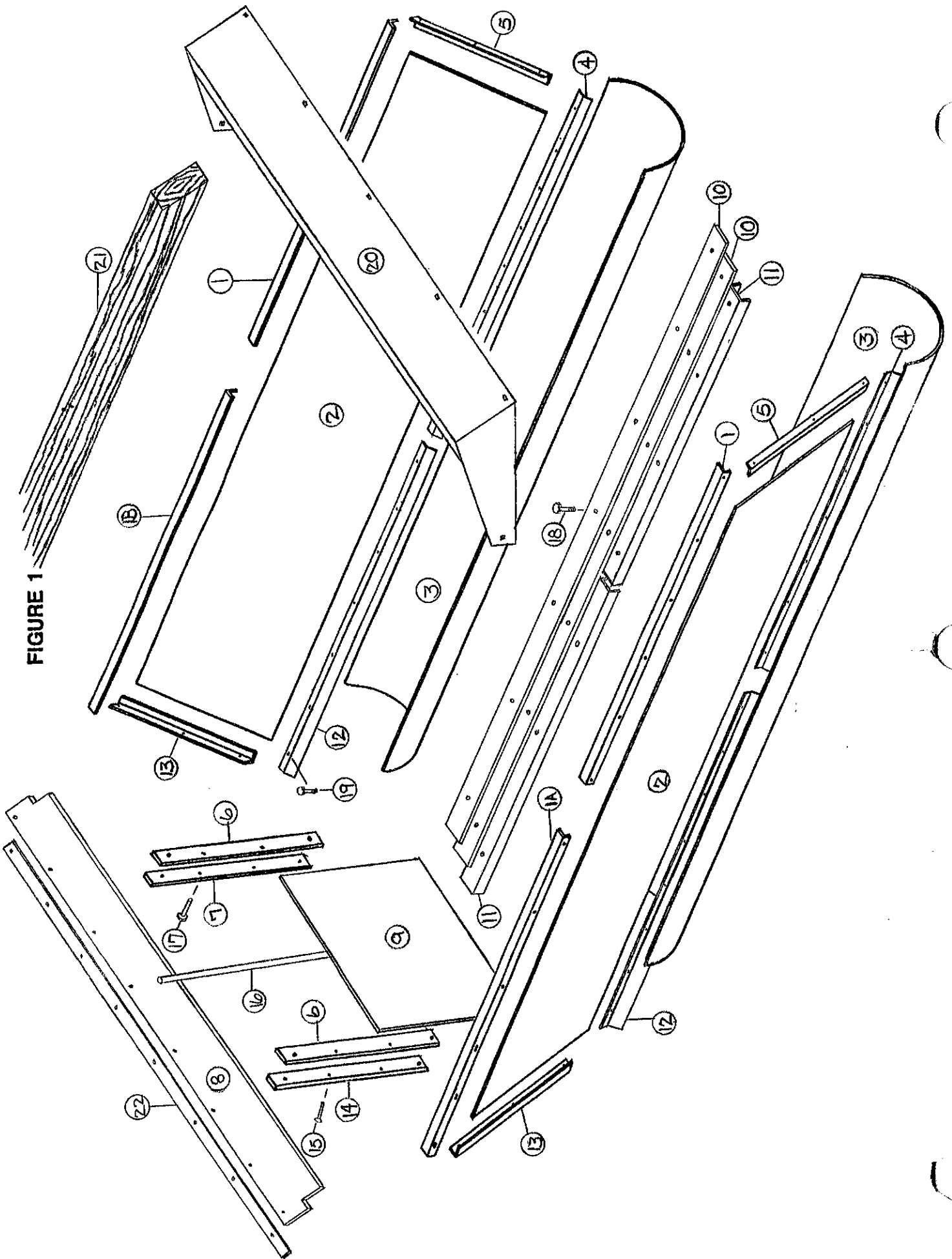


FIGURE 1



**FIGURE ONE
BOX AND COMPONENT PARTS**

NO.	SPREADER SIZES					Description
	1350	1650	1800	2200	2600	
1.	12SV1	"	16SV1	16SV2	"	Poly Holddown Top
1A.	12SV2	"	16SV3	16SV2	"	Poly Holddown Top
1B.	12SV1	"	16SV1	16SV2	"	Poly Holddown Top
2.	12SV3	"	16SV4	16SV5	"	Poly Side Liner
3.	12SV4	"	16SV6	"	"	Auger Housing Poly
4.	12SV5	"	16SV7	"	"	Front Wiper
5.	16SV8	"	"	"	"	Front Poly Holddown
6.	16SV9	"	"	"	"	Door Guide Poly
7.	16SV10	"	"	"	"	LH Door Guide
8.	12SV29	"	"	16SV11	"	Rubber Splash
9.	16SV12	"	"	"	"	Back Door
10.	12SV6	"	16SV13	"	"	Center Wipers
11.	12SV7	"	16SV14	"	"	Auger Poly Holddowns
12.	12SV8	"	16SV15	"	"	Back Wiper
13.	16SV16	"	"	"	"	Rear Poly Holddowns
14.	16SV18	"	"	"	"	RH Door Guide
15.	16SV19	"	"	"	"	CTR Sunk Bolt 1/2 x 2"
16.	16SV20	"	"	"	"	Adjustable Gate Indicator
17.	23N194	"	"	"	"	1/2 x 2" Bolt Gr.5
18.	16SV21	"	"	"	"	3/8 x 1 1/2" Bolt Gr.5 Carr.
19.	BFR247	"	"	"	"	3/8 x 1" Bolt Gr.5 Carr.
20.	—	16SV216	—	—	16SV216	Front Splash
21.	—	—	—	—	16SV217	Wood Rails
*	—	16SV218	—	—	—	Wood Rail LH
*	—	16SV219	—	—	—	Wood Rail RH
22.	12SV30	"	"	16SV220	"	STRAP

NOTE: * (Means Not Shown)
 —(Means Not Used on This Size)
 " (Means Same as Preceding Number)

FIGURE 2

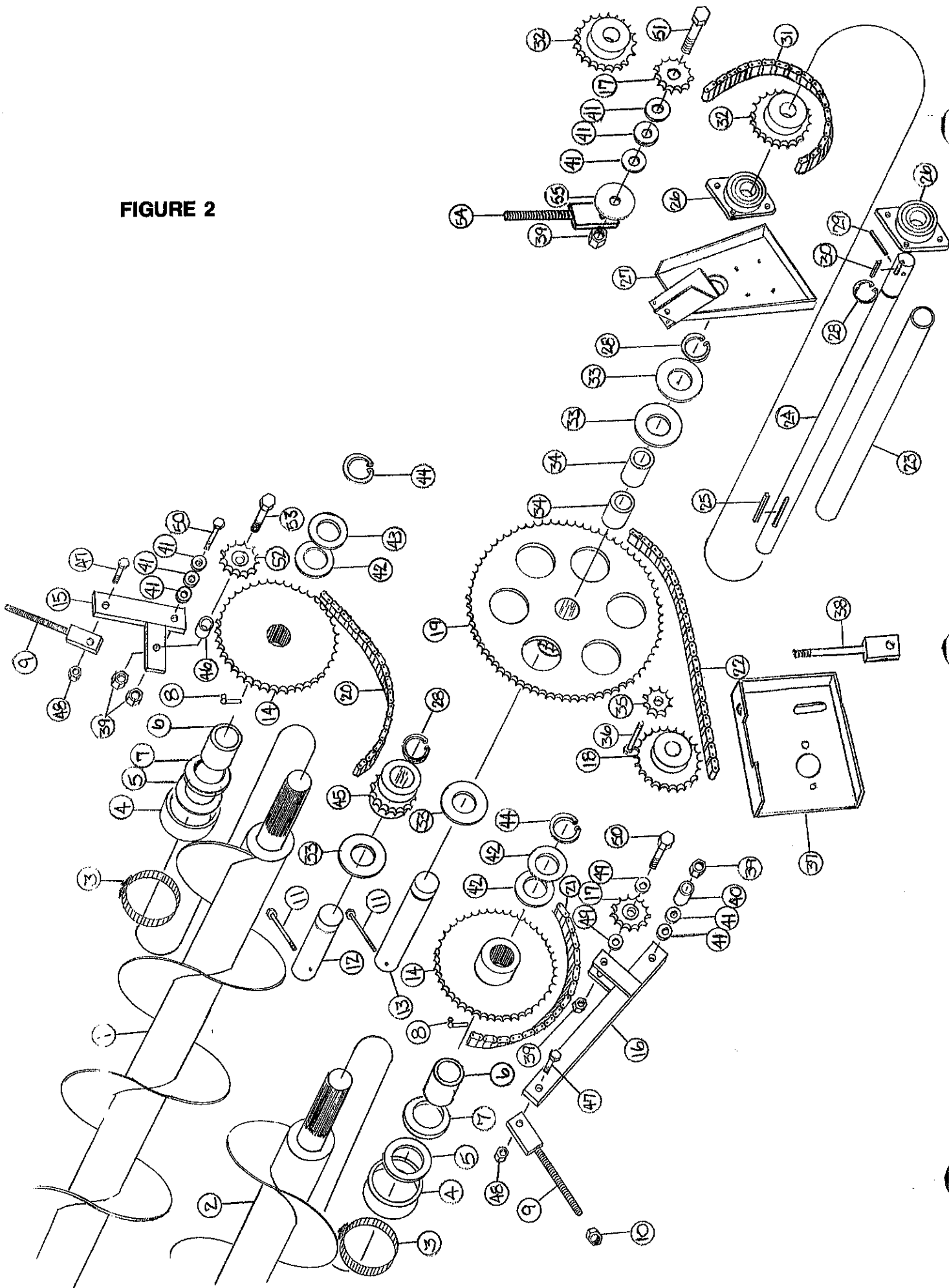
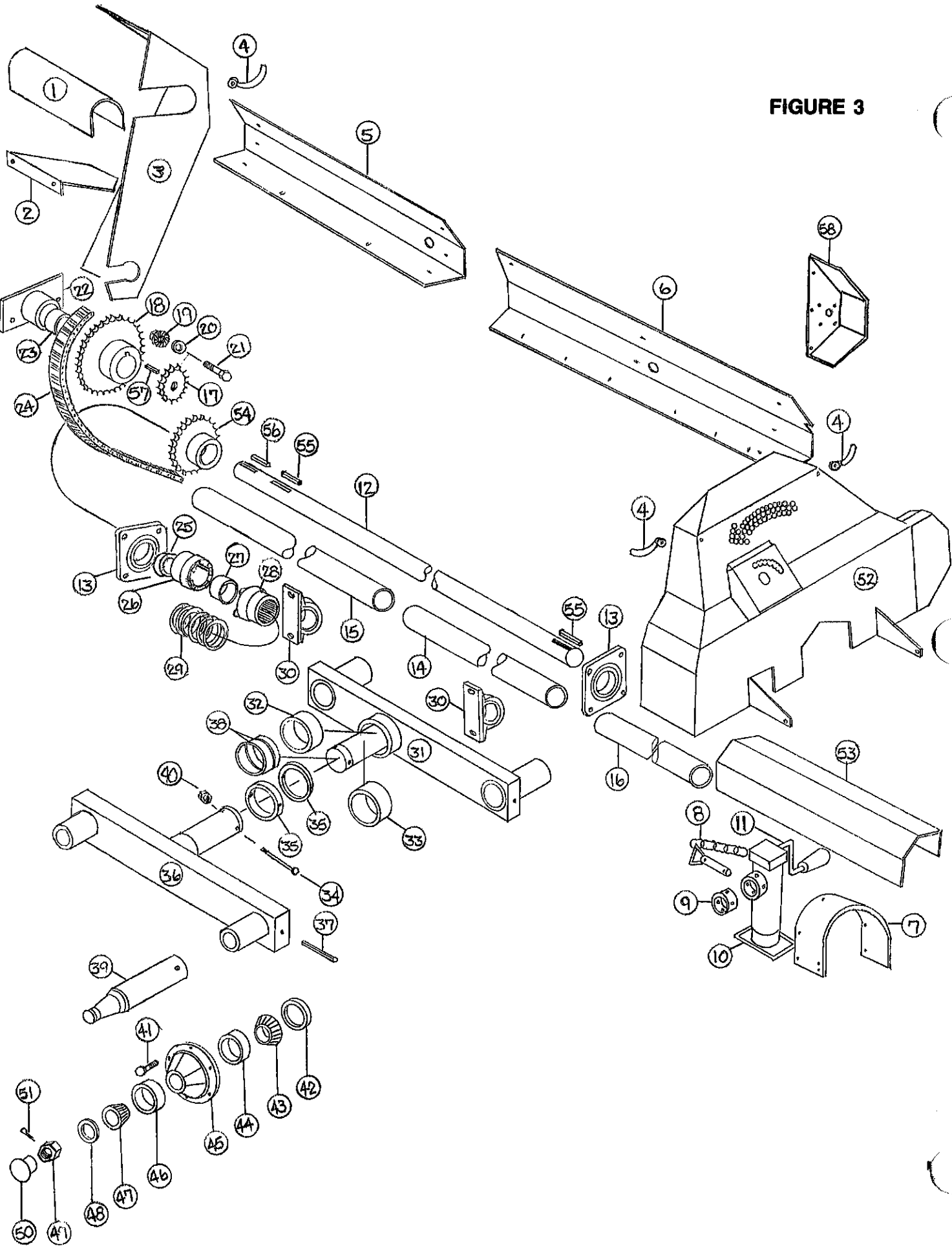


FIGURE 2 AUGERS AND DRIVE ASSEMBLY

NO.	SPREADER SIZES					DESCRIPTION
	1350	1650	1800	2200	2600	
1.	12SV9	"	16SV22	"	"	LH Auger
2.	12VS10	"	16SV23	"	"	RH Auger
3.	12V70	"	"	"	"	Clamp
4.	16SV24	"	"	"	"	Outer Seal
5.	16SV25	"	"	"	"	Inner Seal
6.	12V73	"	"	"	"	Bronze Bushing
7.	12V72	"	"	"	"	Bronze Thrust Washer
8.	16SV26	"	"	"	"	Pipe Grease Zerk
9.	12V78	"	"	"	"	Tightener Bracket
10.	R29	"	"	"	"	1/2" Nut
11.	23N1	"	"	"	"	Bolt 5/16 x 5" GR.5
12.	16SV27	"	"	"	"	Idler Shaft
13.	16SV28	"	"	"	"	Primary Shaft
14.	12N81	"	"	"	"	45T Sprocket
15.	16SV29	"	"	"	"	RH Tightener Bracket
16.	16SV30	"	"	"	"	LH Tightener Bracket
17.	12V77	"	"	"	"	12T Idler Sprocket
18.	12SV11	"	"	16SV31	"	16T Sprocket
19.	16SV32	"	"	"	"	98T Main Drive Sprocket
20.	16SV33	"	"	"	"	LH Final Drive Chain #80 58 PTCH
21.	16SV34	"	"	"	"	RH Final Drive Chain #80 79 PTCH
22.	16SV35	"	"	"	"	Aug. Prim. Drive Chain #60 110 PTCH
23.	16SV36	"	"	"	"	Input PVC Shield
24.	16SV37	"	"	"	"	Input Shaft
25.	S38	"	"	"	"	3/8 x 2-3/8" Key W/Round Ends
26.	12V67	"	"	"	"	Bearing Assembly
27.	16SV38	"	"	"	"	Rear Input Post
28.	12V62	"	"	"	"	Snap Ring
29.	12V59	"	"	"	"	3/8 x 2-3/4" Roll Pin
30.	16SV90	"	"	"	"	3/8 x 1-1/2" Sq. Key
31.	16SV39	"	"	"	"	Beater Front Drive Chain #80 75 Ptch.
32.	12V104	"	"	"	"	20T Sprocket
33.	16SV40	"	"	"	"	Shim
34.	16SV41	"	"	"	"	Bronze Bushing 1-3/4 OD x 1-1-1/2 ID x 2-3/8
35.	12N42	"	"	"	"	15T Sprocket
36.	16SV91	"	"	"	"	Bolt 1/2 x 3-1/4" GR.5
37.	16SV42	"	"	"	"	Motor Mount
38.	16SV43	"	"	"	"	Tightener Bracket
39.	HE7	"	"	"	"	3/4" Nut
40.	16SV44	"	"	"	"	Spacer
41.	T73	"	"	"	"	Shim
42.	16SV45	"	"	"	"	Shim 1/8"
43.	16SV46	"	"	"	"	Shim 1/4"
44.	B17F	"	"	"	"	Snap Ring
45.	16SV47	"	"	"	"	12T Idler Sprocket
46.	16SV48	"	"	"	"	Spacer
47.	12V45	"	"	"	"	Bolt 1/2 x 1-1/2" Gr.5
48.	9S17	"	"	"	"	1/2" Lock Nut
49.	16SV49	"	"	"	"	Shim 1/16"
50.	HE8	"	"	"	"	Bolt 3/4 x 2-1/4" Gr.5
51.	16SV50	"	"	"	"	Bolt 3/4 x 2-1/2" Gr.5
52.	16SV201 16SV328	"	"	"	"	Reinforced 15T Idler Sprocket
53.	16SV202	"	"	"	"	Bolt 3/4" x 3-1/4" Gr.5
54.	16SV204	"	"	"	"	Tightener Mount
55.	16SV211	"	"	"	"	Spacer
OPT.1000 RPM SPROCKETS						
32.	16SV213	"	"	"	"	23T Sprocket
	ST11	"	"	"	"	13T Sprocket

NOTE: * (Means Not Shown)
 — (Means Not Used on This Size)
 " (Means Same as Preceding Number)

FIGURE 3

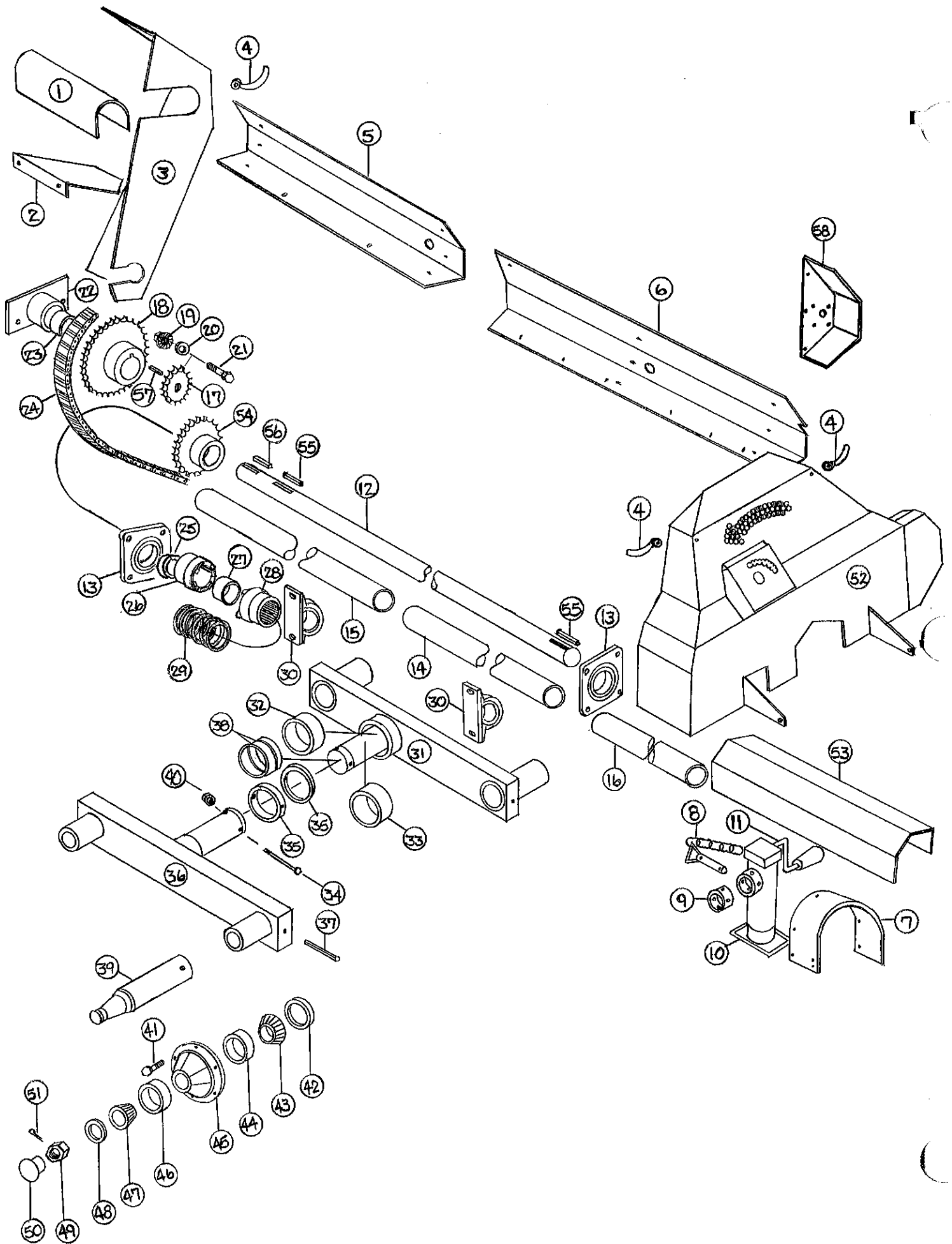


**FIGURE 3
SHIELDS, SIDE SHAFT AND AXLE ASSEMBLIES**

NO.	SPREADER SIZES					DESCRIPTION
	1350	1650	1800	2200	2600	
1.	16SV51	"	"	"	"	Clutch Shield
2.	16SV52	"	"	"	"	Clutch Shield Bottom
3.	16SV53	"	"	"	"	Top Beater Shield
4.	S192	"	"	"	"	Handle Nut
5.	12SV12	"	16SV54	16SV55	"	Rear Side Shield
6.	12SV13	"	16SV56	16SV57	"	Front Side Shield
7.	16SV58	"	"	"	"	PTO Rubber
8.	12N13	"	"	"	"	Jack Pin
9.	12N14	"	"	"	"	Jack Mount
10.	27N14	"	"	"	"	Jack
11.	12N12	"	"	"	"	Jack Handle
Not Shn.	12N9	"	"	"	"	Jack Gear Replacement Kit
12.	12SV14	"	16SV59	"	"	Side Shaft
13.	12V67	"	"	"	"	Pillow Block Bearing
14.	—	—	16SV60	"	"	Side Center PVC Shield
15.	12SV15	"	16SV61	"	"	Side Back PVC Shield
16.	12SV16	"	16SV62	"	"	Side Front PVC Shield
17.	12V77	"	"	"	"	12T Idler Sprocket
18.	16SV63	"	"	"	"	23T Beater Sprocket
19.	16SV64	"	"	"	"	3/4" Flange Nut
20.	T73	"	"	"	"	Shim
21.	HE8	"	"	"	"	Bolt 3/4 x 2-1/4" Gr.5
22.	16SV65	"	"	"	"	Outer Bearing
23.	16SV66	"	"	"	"	Bronze Bushing 1-3/4 OD x 1-1/2 ID x 2-1/8
24.	16SV67	"	"	"	"	2nd Beater Chain #80 64 Pitches
25.	16SV68	"	"	"	"	Clutch Stop
26.	16SV69	"	"	"	"	Keyed Clutch
27.	16SV70	"	"	"	"	Bronze Bushing 1-1/2 OD x1 ID x 3/4"
28.	16SV71	"	"	"	"	Splined Clutch
29.	23N89	"	"	"	"	Spring
30.	16SV72	"	"	"	"	Pillow Block Bearing
31.	—	—	16SV73	16SV74	"	Tandem Beam LH
Option	12SV17	"	—	—	—	Tandem Beam LH
32.	—	—	B111	16SV75	"	Outer Bushing for Tandem Axle
33.	B58	"	"	16SV76	"	Bushing for Tandem Axle
34.	B61	"	"	—	—	Bolt for Axle 1/2" x 5" Gr.5
34.	—	—	—	16SV77	"	Bolt for Axle 1/2" x 6" Gr.5
35.	16SV78	"	"	16SV214	"	Collar for Axle
36.	—	—	16SV80	16SV81	"	Tandem Beam RH
Option	12SV18	"	—	—	—	Tandem Beam RH
37.	31N4	"	"	"	"	Roll Pin
38.	16SV82	"	"	16SV83	16SV83	Inner Bushing
39.	12SV19	12SV26	37N8	16SV84	"	Standard Spindle
Option	12SV26	—	37N9	—	—	Spindle for 14 x 16.1 Wheel
Option	31N2	"	—	—	—	Spindle for 8 x 22.5 Wheel
Option	—	—	16SV203	16SV85	"	Spindle for 13.5 x 22.5 Wheel
40.	9S17	"	"	"	"	1/2" Top Lock Nut

NOTE: * (Means Not Shown)
 — (Means Not Used on This Size)
 " (Means Same as Preceding Number)

(Continued on Page 29)



**FIGURE 3
SHIELDS, SIDE SHAFT AND AXLE ASSEMBLIES**

NO.	SPREADER SIZES					DESCRIPTION
	1350	1650	1800	2200	2600	
41.	26G5	"	"	"	"	Stud
Not Shn.	26G6	"	"	"	"	Nut for Stud
Option	B32	"	—	—	—	Hub Bolt -used w/tandem option
42.	B90	"	"	"	"	Seal
Option	B8	"	—	—	—	Seal -used w/tandem option
43.	B91	"	"	"	"	Inner Bearing
Option	B7	"	—	—	—	Inner Bearing -used w/tandem option
44.	B91A	"	"	"	"	Inner Race
Option	B7A	"	—	—	—	Inner Race -used w/tandem option
45.	26G4	"	"	"	"	Hub
Option	B6	"	—	—	—	Hub -used w/tandem option
46.	B94A	"	"	"	"	Outer Race
Option	B5A	"	—	—	—	Hub -used w/tandem option
47.	B94	"	"	"	"	Outer Bearing
Option	B5	"	—	—	—	Outer Bearing -used w/tandem option
48.	B4	"	"	"	"	Washer
49.	B3	"	"	"	"	Nut
50.	B2	"	"	"	"	Hub Cap
51.	B31	"	"	"	"	Cotter Pin
52.	16SV86	"	"	"	"	Main Shield
53.	16SV87	"	"	"	"	PTO Shield
54.	ST11	"	"	"	"	13T Sprocket
55.	S38	"	"	"	"	Key 3/8 x 2-3/8" Sq.
56.	16SV90	"	"	"	"	Key 3/8 x 1-1/2" Sq.
57.	PB87	"	"	"	"	Key 3/8 x 2" Sq.
58.	16SV205	"	"	"	"	Bearing Mount
Not Shn.	23N180	—	23N180	—	—	Tire 11 x 22.5
Not Shn.	—	—	—	23N54	"	Tire 16.5 x 16.1
Not Shn.	—	16SV88	—	—	—	Tire 425 x 22.5
Option	23N54	—	23N54	—	—	Tire 16.5 x 16.1
Option	—	23N180	—	—	—	Tire 11 x 22.5
Option	16SV88	—	16SV88	"	"	Tire 425 x 22.5
Not Shn.	23N179	—	23N179	—	—	Wheel 8 x 22.5
Not Shn.	—	—	—	12V36	"	Wheel 14 x 16.1
Not Shn.	—	16SV89	—	—	—	Wheel 13.5 x 22.5
Option	—	23N179	—	—	—	Wheel 8 x 22.5
Option	12V36	—	12V36	—	—	Wheel 14 x 16.1
Option	—	—	16SV89	"	"	Wheel 13.5 x 22.5

NOTE: * (Means Not Shown)
 — (Means Not Used on This Size)
 " (Means Same as Preceding Number)

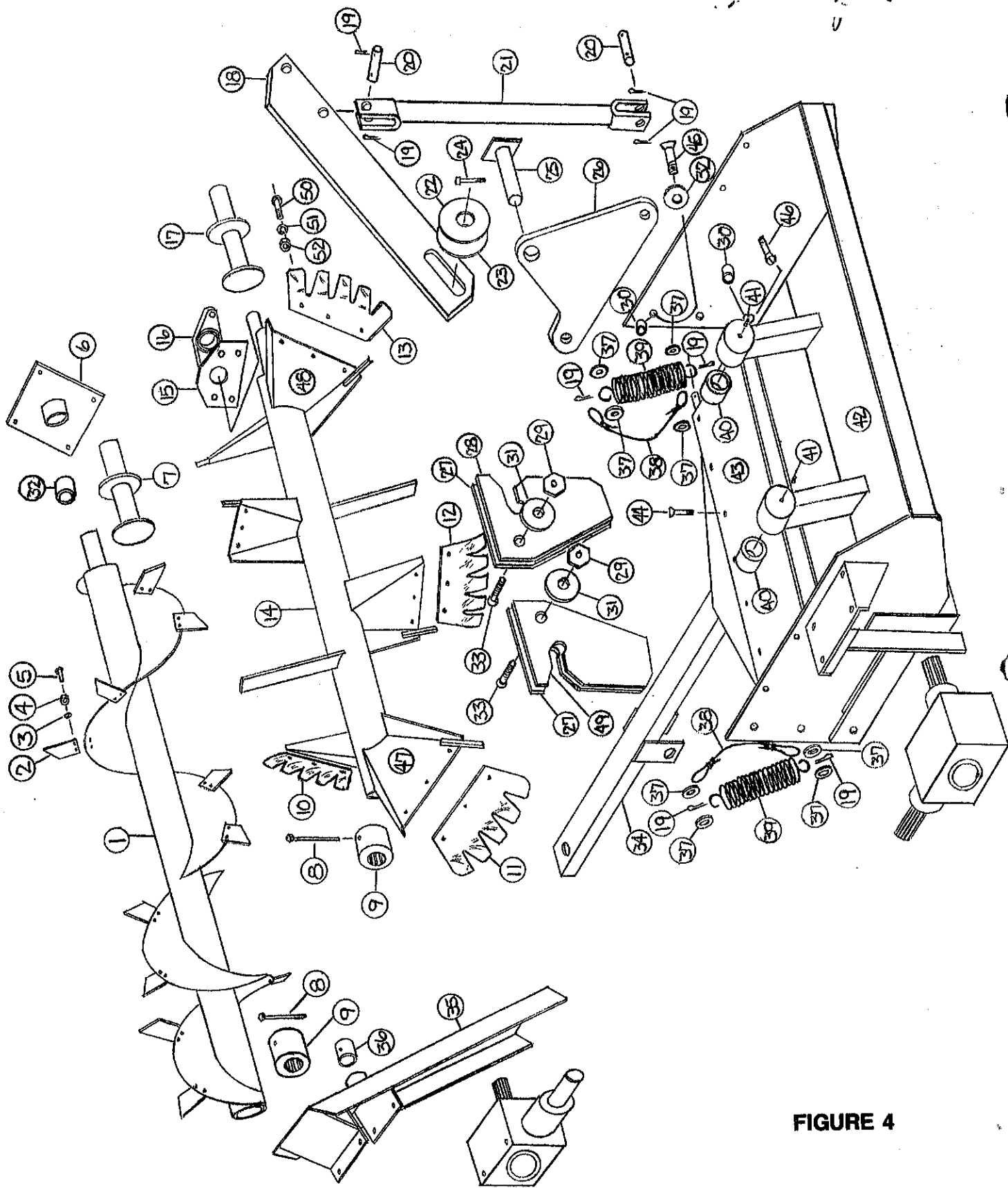


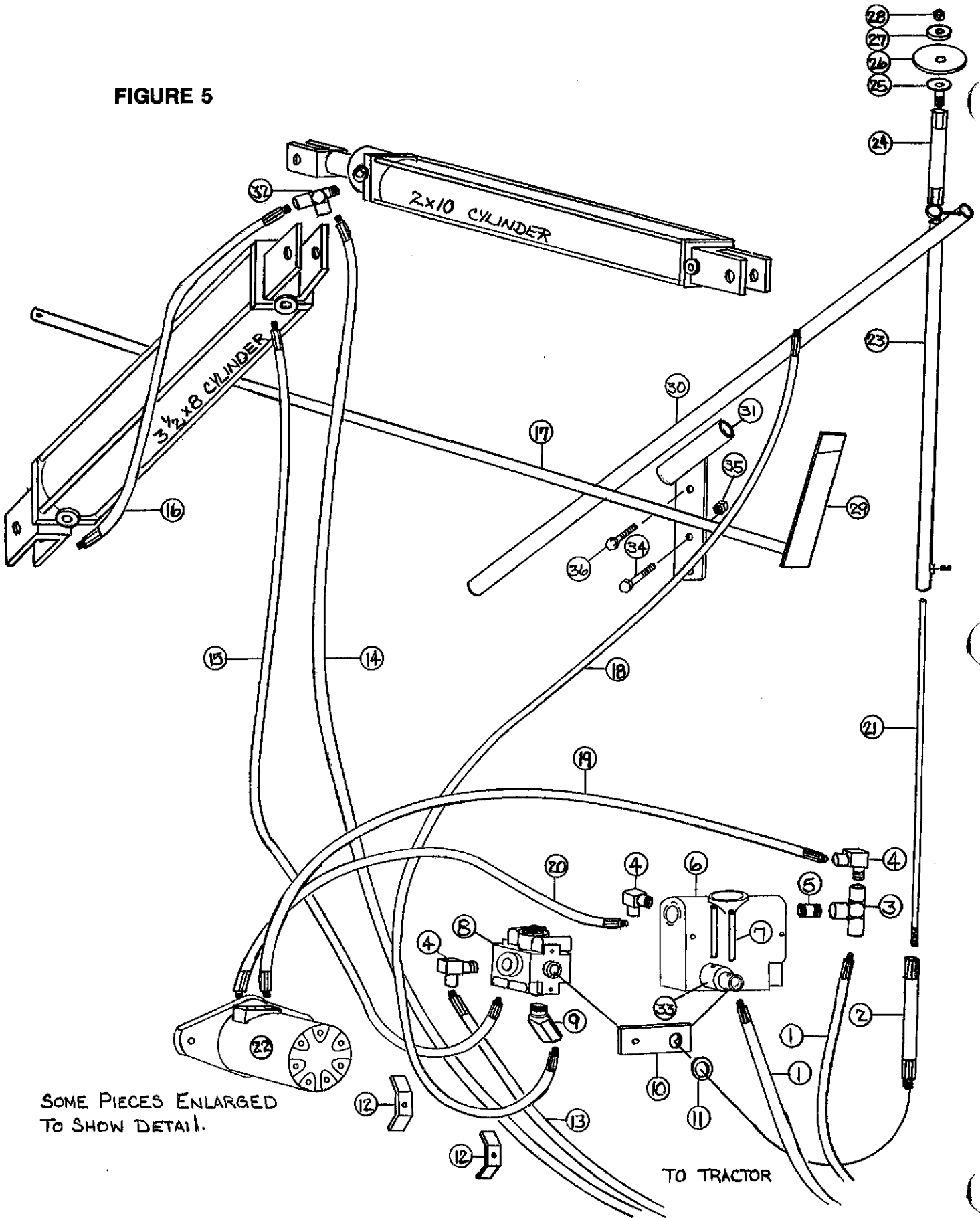
FIGURE 4

**FIGURE 4
BEATERS AND PAN ASSEMBLIES**

No.	SPREADER SIZES					Description
	1350	1650	1800	2200	2600	
1.	16SV92	"	"	"	"	Inside Beater
2.	16SV93	"	"	"	"	Beater Tooth
3.	R35	"	"	"	"	1/2" Lock Washer
4.	R11	"	"	"	"	1/2" Lock Nut
5.	R10	"	"	"	"	Bolt 1/2 x 1-1/4" Gr.5
6.	16SV94	"	"	"	"	RH Beater Bearing
7.	16SV95	"	"	"	"	Beater Stub Shaft
8.	23N1	"	"	"	"	Bolt 5/16 x 5" Gr.5
9.	23N2	"	"	"	"	Splined Beater Insert
10.	16SV96	"	"	"	"	LH Beater Blade-Inside
11.	16SV97	"	"	"	"	LH Beater Blade-Outside
12.	16SV98	"	"	"	"	RH Beater Blade-Inside
13.	16SV99	"	"	"	"	RH Beater Blade-Outside
14.	16SV100	"	"	"	"	Beater
15.	16SV101	"	"	"	"	Beater Bearing Mount
16.	12N29	"	"	"	"	Pillow Block Bearing
17.	16SV102	"	"	"	"	Beater Stub Shaft
18.	16SV103	"	"	"	"	Door Lift Bar
19.	T72	"	"	"	"	Cotter Pin 5/32 x 1-1/2"
20.	16SV104	"	"	"	"	Lifting Arm Pins
21.	16SV105	"	"	"	"	Lift Arm
22.	16SV106	"	"	"	"	Washer
23.	16SV107	"	"	"	"	Poly Washer
24.	16SV108	"	"	"	"	Cotter Pin 5/16 x 2-1/2"
25.	16SV109	"	"	"	"	Bell Crank Hinge
26.	16SV110	"	"	"	"	Bell Crank
27.	16SV111	"	"	"	"	Sealing Plate Poly
28.	16SV112	"	"	"	"	Sealing Plate RH
29.	16SV221	"	"	"	"	Door Stop Nut
30.	16SV210	"	"	"	"	Spacer 15/16 x 1"
31.	16SV115	"	"	"	"	Spring
32.	16SV215	"	"	"	"	Bushing 1-5/8OD x 1-3/8ID x 2"
33.	16SV117	"	"	"	"	Bolt 1/2 x 1-1/4 Allen Head
34.	12SV20	"	16SV118	"	"	Clean-Out Door
35.	16SV119	"	"	"	"	Gear Box Mount
36.	16SV120	"	"	"	"	Bronze Bushing 1-5/8 OD x 1-3/8 ID x 2"
37.	T73	"	"	"	"	Washer
38.	16SV121	"	"	"	"	Safety Cable
39.	BFR15	"	"	"	"	Spring
40.	23N17	"	"	"	"	Bushing 1-3/4 OD x 1-1/2 ID x 2 1/2"
41.	G89	"	"	"	"	Grease Zerk
42.	16SV122	"	"	"	"	Back Pan
43.	16SV123	"	"	"	"	Clean Out Door Poly
44.	16SV124	"	"	"	"	Bolt 5/16 x 1 Counter-Sunk
45.	16SV125	"	"	"	"	Bolt 1/2 x 1-3/4 Counter-Sunk
46.	16SV126	"	"	"	"	Bolt 1/2 x 2 Counter-Sunk
47.	16SV127	"	"	"	"	LH Blade Holder
48.	16SV128	"	"	"	"	RH Blade Holder
49.	16SV208	"	"	"	"	Sealing Plate LH
50.	R10	"	"	"	"	1/2-13 x 1-1/4" Bolt Gr.5
51.	R35	"	"	"	"	1/2" Lock Washer
52.	R11	"	"	"	"	1/2" Lock Nut

NOTE: * (Means Not Shown)
 — (Means Not Used on This Size)
 " (Means Same as Preceding Number)

FIGURE 5



SOME PIECES ENLARGED
TO SHOW DETAIL.

TO TRACTOR

**FIGURE 5
HYDRAULICS**

NO.	SPREADER SIZES					Description
	1350	1650	1800	2200	2600	
1.	16SV129	"	"	"	"	1/2" Hyd. Hose x 108"
2.	16SV130	"	"	"	"	Flexible Connector
3.	DF8	"	"	"	"	1/2" Hydraulic Tee
4.	HE58	"	"	"	"	1/2" Hydraulic Street Elbow
5.	16SV131	"	"	"	"	1/2" x 3" Nipple
6.	DF26	"	"	"	"	Speed Control Valve
7.	16SV132	"	"	"	"	5/16" x 4" Expansion Pin
8.	16SV133	"	"	"	"	Selector Valve
9.	16SV134	"	"	"	"	45 Deg. Street Elbow
10.	16SV135	"	"	"	"	Connector Bar
11.	16SV136	"	"	"	"	Spacer Washer
12.	23N67	"	"	"	"	Hose Clamp
13.	16SV137	"	"	"	"	3/8" Hyd. Hose x 114"
14.	—	—	23N118	"	"	3/8" Hyd. Hose x 264"
14.	12SV21	"	—	—	—	3/8" Hyd. Hose x 236"
15.	—	—	16SV138	"	"	3/8" Hyd. Hose x 197"
15.	12SV22	"	—	—	—	3/8" Hyd. Hose x 155"
16.	—	—	BFR53	"	"	3/8" Hyd. Hose x 56"
16.	12SV23	"	—	—	—	3/8" Hyd. Hose x 36"
17.	—	—	16SV139	"	"	Clean Out Door Indicator Rod
17.	12SV24	"	—	—	—	Clean Out Door Indicator Rod
18.	—	—	16SV140	"	"	3/8" Hyd. Hose x 173"
18.	12SV25	"	—	—	—	3/8" Hyd. Hose x 145"
19.	—	—	—	16SV142	"	1/2" Hyd. Hose x 46"
19.	16SV141	"	"	—	—	1/2" Hyd. Hose x 24"
20.	—	—	—	16SV144	"	1/2" Hyd. Hose x 41"
20.	16SV143	"	"	—	—	1/2" Hyd. Hose x 19"
21.	16SV145	"	"	"	"	Inner Control Rod
22.	16SV149	"	"	16SV150	"	Hydraulic Motor
23.	16SV146	"	"	"	"	Outer Control Rod
24.	16SV147	"	"	"	"	Handle Connector
25.	DF10	"	"	"	"	Handle Bracket
26.	DF11	"	"	"	"	Handle
27.	DF12	"	"	"	"	Washer
28.	K93	"	"	"	"	3/8" Lock Nut
29.	16SV148	"	"	"	"	Clean Out Door Indicator Bar
30.	16SV207	"	"	"	"	Control Rod Handle
31.	16SV206	"	"	"	"	Control Rod Handle Bracket
32.	23N116	"	"	"	"	Tee
33.	16SV209	"	"	"	"	Speed Control Adapter
34.	B67	"	"	"	"	Bolt 3/8 x 1-1/4"
35.	K93	"	"	"	"	Lock Nut 3/8"
36.	T19	"	"	"	"	Bolt 3/8 x 2"
*	16SV212	"	"	"	"	Complete Control Rod Handle Assm.

NOTE: * (Means Not Shown)
 — (Means Not Used on This Size)
 " (Means Same as Preceding Number)

FIGURE 6
 21—GEAR BOX COMPLETE

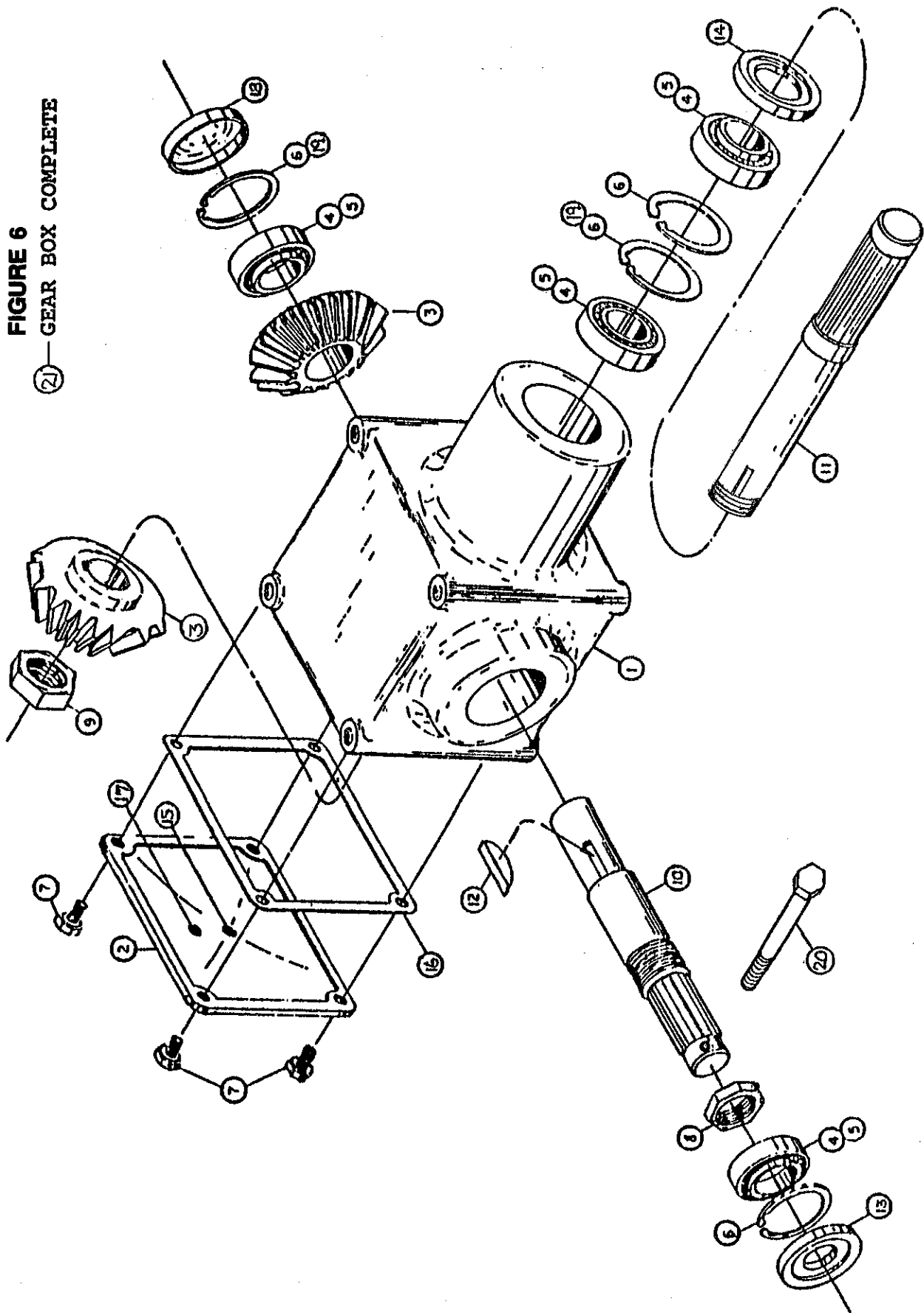


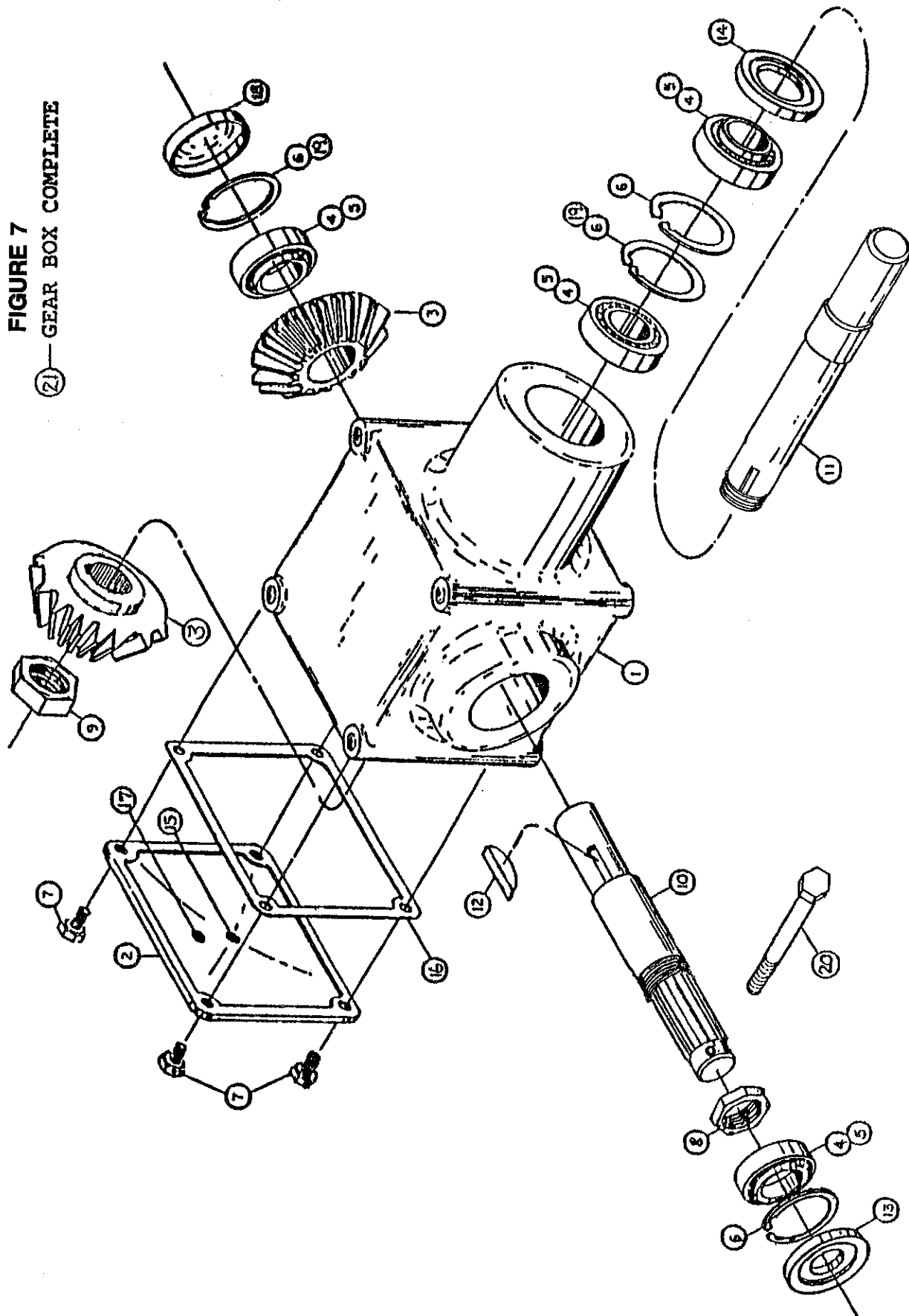
FIGURE 6
GEARBOX — OUTSIDE BEATER

No.	SPREADER SIZES					Description
	1350	1650	1800	2200	2600	
1.	G50	"	"	"	"	Housing
2.	G51	"	"	"	"	Cover
3.	G52	"	"	"	"	Bevel Gear
4.	G53	"	"	"	"	Bearing #14137A
5.	G54	"	"	"	"	Bearing Cup #14276
6.	G55	"	"	"	"	Snap Ring
7.	G56	"	"	"	"	Capscrew
8.	G57	"	"	"	"	1-1/2" Stake Nut
9.	G58	"	"	"	"	1-3/8" Stake Nut
10.	23N137	"	"	"	"	Output Shaft
11.	G94	"	"	"	"	Input Shaft
12.	G61	"	"	"	"	"E" (1210) Woodruff Key
13.	G63	"	"	"	"	Seal - Output
14.	G64	"	"	"	"	Seal - Input
15.	G65	"	"	"	"	Plug 3/8 NPT
16.	G66	"	"	"	"	Gasket
17.	G67	"	"	"	"	Plug 1/8 NPT
18.	G68	"	"	"	"	Cap
19.	G69	"	"	"	"	Shim
20.	23N1	"	"	"	"	5/16" x 5" Bolt Gr.5
21.	16SV156	"	"	"	"	Bevel Gearbox Complete

NOTE: * (Means Not Shown)
 — (Means Not Used on This Size)
 " (Means Same as Preceding Number)

DAUG

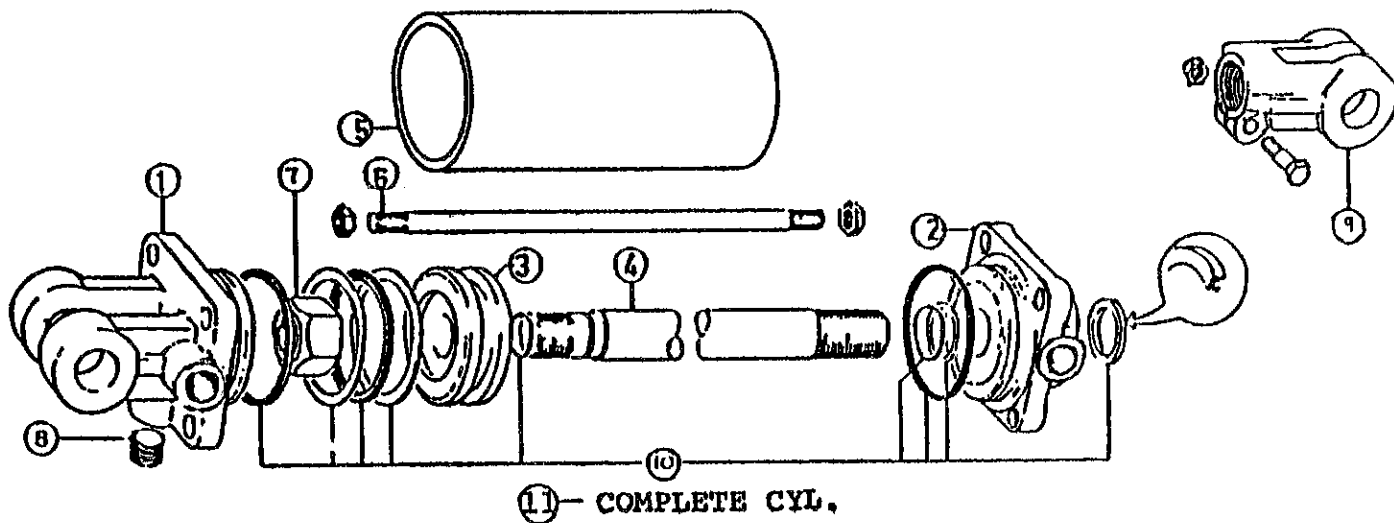
FIGURE 7
GEAR BOX COMPLETE



**FIGURE 7
GEARBOX — INSIDE BEATER**

No.	SPREADER SIZES					Description
	1350	1650	1800	2200	2600	
1.	G50	"	"	"	"	Housing
2.	G51	"	"	"	"	Cover
3.	G52	"	"	"	"	Gear
4.	G53	"	"	"	"	Bearing #14137A
5.	G54	"	"	"	"	Bearing Cup #14276
6.	G55	"	"	"	"	Snap Ring
7.	G56	"	"	"	"	Capscrew
8.	G57	"	"	"	"	1-1/2" Stake Nut
9.	G58	"	"	"	"	1-3/8" Stake Nut
10.	16SV153	"	"	"	"	Output Shaft
11.	16SV154	"	"	"	"	Input Shaft
12.	G61	"	"	"	"	"E" (1210) Woodruff Key
13.	G63	"	"	"	"	Seal - Output
14.	G64	"	"	"	"	Seal - Input
15.	G65	"	"	"	"	Plug 3/8 NPT
16.	G66	"	"	"	"	Gasket
17.	G67	"	"	"	"	Plug 1/8 NPT
18.	G68	"	"	"	"	Cap
19.	G69	"	"	"	"	Shim
20.	23N1	"	"	"	"	5/16" x 5" Bolt Gr.5
21.	16SV155	"	"	"	"	Bevel Gearbox Complete

NOTE: * (Means Not Shown)
 — (Means Not Used on This Size)
 " (Means Same as Preceding Number)



**FIGURE 8
HYDRAULIC CYLINDER — BACK DOOR**

SPREADER SIZES

No.	1350	1650	1800	2200	2600	Description
1.	16SV157	"	"	"	"	Clevis Cap
2.	16SV158	"	"	"	"	Rod Cap
3.	16SV159	"	"	"	"	Piston
4.	16SV160	"	"	"	"	Rod
5.	16SV161	"	"	"	"	Cyl. Tube
6.	16SV162	"	"	"	"	Tie Rod
7.	16SV163	"	"	"	"	Piston Nut
8.	16SV164	"	"	"	"	Plug
9.	16SV165	"	"	"	"	Rod Clevis
10.	16SV166	"	"	"	"	Seal Kit
11.	16SV167	"	"	"	"	Complete Hyd. Cylinder

NOTE: * (Means Not Shown)
 — (Means Not Used on This Size)
 " (Means Same as Preceding Number)

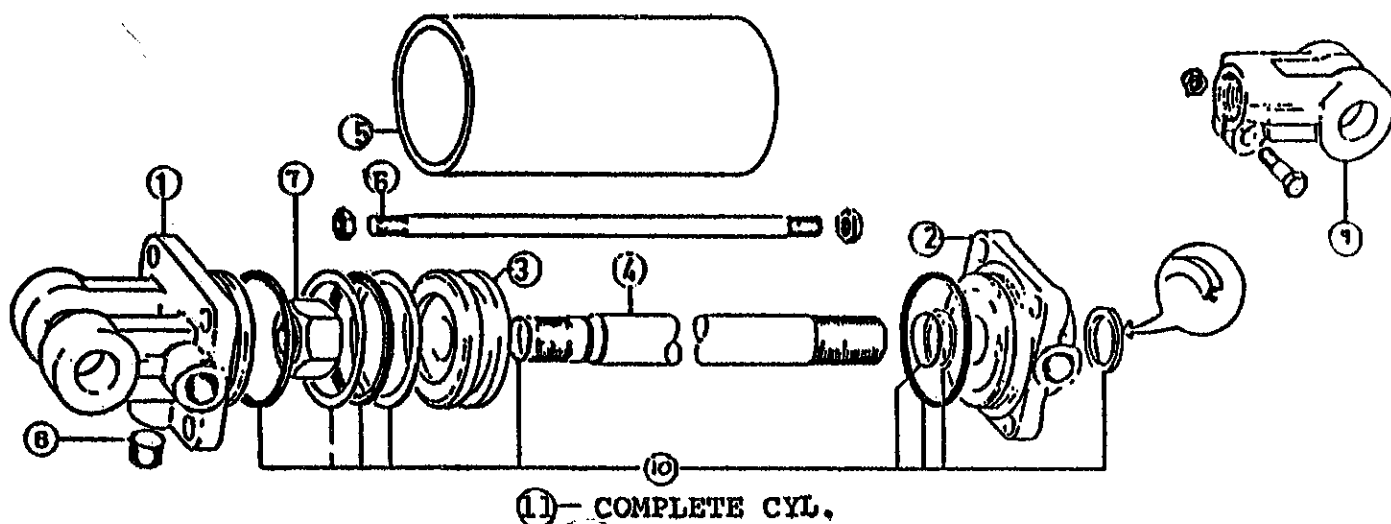


FIGURE 9
HYDRAULIC CYLINDER — CLEAN OUT DOOR

No.	SPREADER SIZES					Description
	1350	1650	1800	2200	2600	
1.	23N142	"	"	"	"	Clevis Cap
2.	23N143	"	"	"	"	Rod Cap
3.	23N144	"	"	"	"	Piston
4.	16SV168	"	"	"	"	Rod
5.	16SV169	"	"	"	"	Cyl. Tube
6.	16SV170	"	"	"	"	Tie Rod
7.	23N148	"	"	"	"	Piston Nut
8.	23N149	"	"	"	"	Plug
9.	23N150	"	"	"	"	Rod Clevis
10.	23N151	"	"	"	"	Seal Kit
11.	16SV171	"	"	"	"	Complete Hyd. Cylinder

NOTE: * (Means Not Shown)
 — (Means Not Used on This Size)
 " (Means Same as Preceding Number)

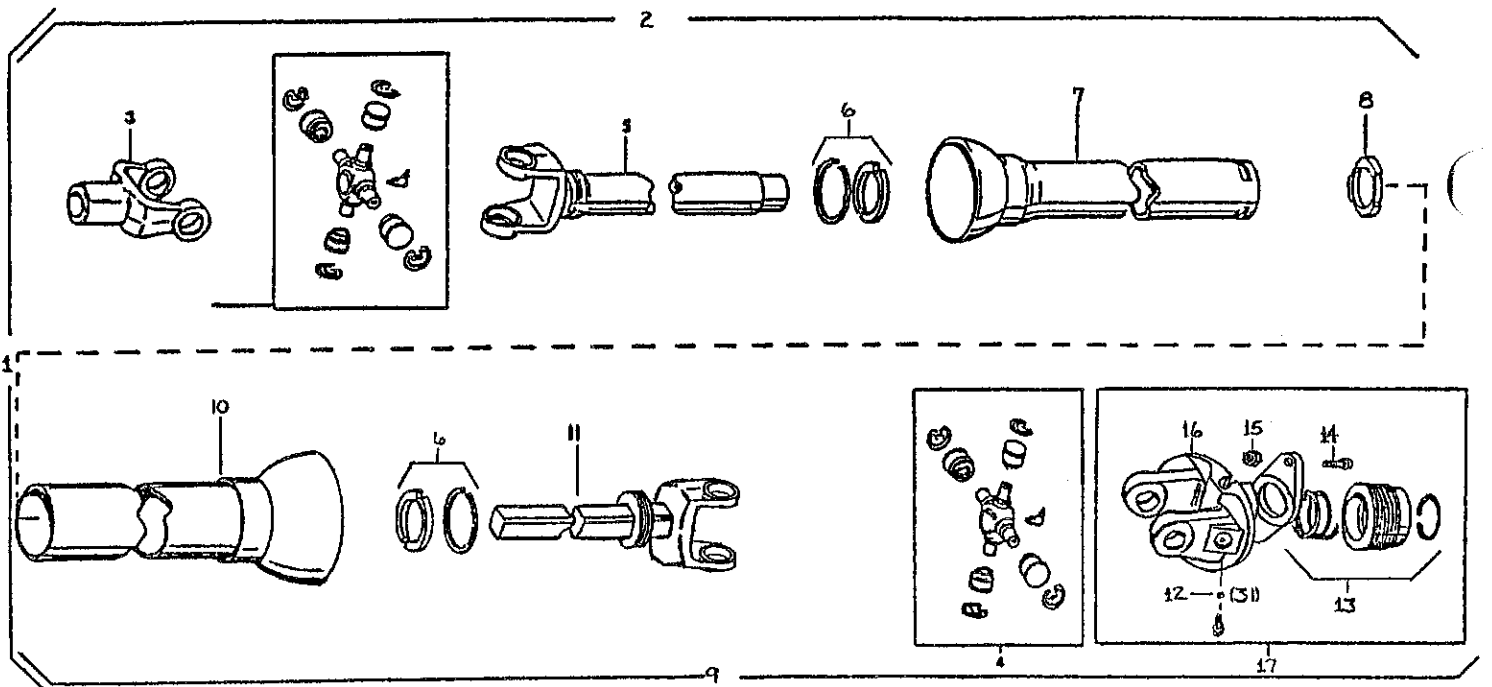


FIGURE 10
PTO's

CYLINDER SIZES

NO.	540 RPM	1000 RPM - 1³/₈"	1000 RPM - 1³/₄"	Description
1.	16SV172	16SV173	16SV174	Complete PTO
2.	16SV175	"	"	Joint & Tube Half W/Guard
3.	16SV178	"	"	End Yoke
4.	16SV179	"	"	Repair Kit
5.	16SV180	"	"	Yoke & Tube Assm.
6.	16SV181	"	"	Nylon Repair Kit
7.	16SV182	"	"	Inner Guard
8.	4A27	"	"	Nylon Centralizer
9.	16SV183	16SV184	16SV185	Joint & Shaft Half W/Guard
10.	16SV186	"	"	Outer Guard
11.	16SV187	"	"	Yoke & Shaft
12.	16SV188	"	"	Ball Shear Repair Kit
13.	16SV189	"	16SV190	Safety Slide Lock Repair Kit
14.	16SV191	16SV192	"	Bolt
15.	16SV193	16SV194	"	Lock Nut
16.	16SV195	16SV196	16SV197	Ball Shear Assm.
17.	16SV198	16SV199	16SV200	Complete Ball Shear Assm.

NOTE: * (Means Not Shown)
 — (Means Not Used on This Size)
 " (Means Same as Preceding Number)